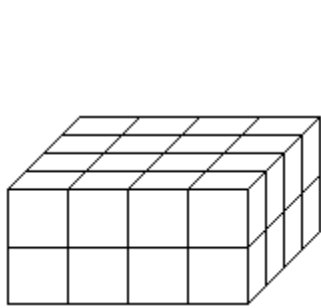
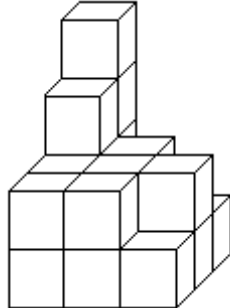


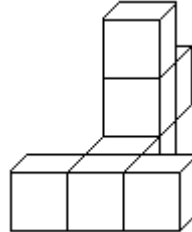
1/ Urči, z kolika krychlí jsou složeny tyto obrázky :



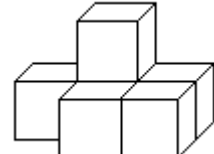
.....



.....



.....



.....

2/ Zkontroluj správnost převodů, chybné výsledky oprav :

15 000 m = 15 km

3500 mm = 35 dm

50 dm = 5 cm

40 cm = 4 m

8 m = 800 mm

130 dm = 13 m

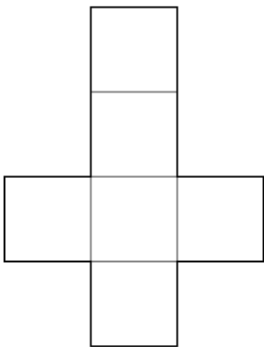
700 cm = 70 dm

5 km = 500 m

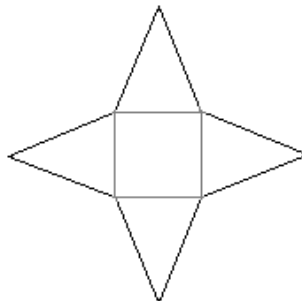
180 mm = 1800 cm

900 cm = 90 mm

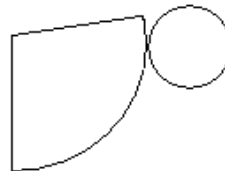
3/ Jaké těleso vznikne po složení těchto skládanek? :



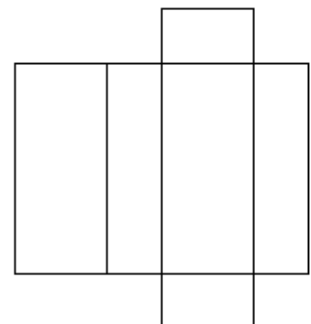
.....



.....



.....



.....